



## Air/Water-Resistive Barrier Application Guidelines for SonoWall FlexWall WM and FlexWall (Optional) Systems

### Guidelines for the application of Sheathing Joint and Rough Window Opening protection based on SonoWall FT-T™ or SonoWall FT-R™ fluid-applied liquid air/water-resistive barriers.

An air/water-resistive barrier must be installed over the entire sheathed substrate and wrapped into rough openings prior to installation of SonoWall FlexWall WM and FlexWall (optional) Systems. The air/water-resistive barriers can be a trowel-, roller-, brush- or spray-applied air/water resistive-barriers. These fluid applied air/water-resistive barriers are coupled with various flashing or reinforcing materials to form suitable systems that must be used for the protection of sheathing joints and rough openings. The following guidelines and drawings are intended to show concepts and common installation practices. The techniques specified in this document are to be used in conjunction with the installation of FlexWall WM and FlexWall (optional) EIFS Wall Systems. The proper use and installation of these recommended protection systems will help achieve a properly protected opening and a warranty compliant installation. The following are acceptable techniques for these applications:

### Sheathing Joint Protection Techniques

#### When using SonoWall FT-T™: Trowel applied Air/Water-Resistive Barrier system

Acceptable substrates listed on product bulletin.

Option 1: SonoWall FT-T in conjunction with BASF Wall Systems Detail/Backwrap Mesh 9.5

Option 2: SonoWall FT-T in conjunction with BASF Wall Systems Flashing Primer and Flash 4 or 9

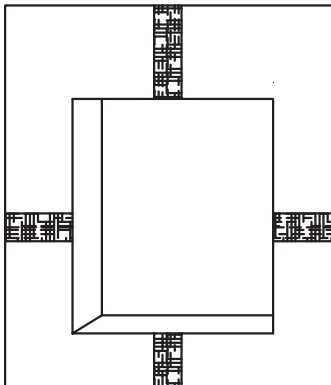
Option 3: SonoWall FT-T in conjunction with BASF Wall Systems Self-Adhering Mesh, 4- or 9- inch wide

#### When using SonoWall FT-R™: Roller-, Spray-, Brush-, or Trowel-applied Air/Water-Resistive Barrier system

Acceptable substrates listed on product bulletin.

Option 4: SonoWall FT-R in conjunction with BASF Wall Systems Flashing Primer and Flash 4 or 9

Option 5: SonoWall FT-R in conjunction with BASF Wall Systems Sheathing Fabric, 4- or 9- inch wide



Option 1: Mix the SonoWall FT-T per the instructions in its product bulletin. Trowel apply a receiving coat in the joint and 2 to 5 inches out on each side. Lay the Detail/Backwrap Mesh into the wet FT-T. Trowel additional FT-T into the mesh to embed.

Option 2: Prime the joint area, out 2 to 5 inches on each side, with Flashing Primer. Allow to cure to almost tack free. Remove the backing from the Flash 4 or 9 inch. Press the Flash over the joint ensuring it is well and evenly adhered. The joint is now ready to receive the SonoWall FT-T.

Option 3: Mix the SonoWall FT-T per the instructions. Apply the Self-Adhering Mesh, 4 or 9 inch over the joint. Trowel apply the SonoWall FT-T over the mesh.

Option 4: Prime the joint area, out 2 to 5 inches on each side, with Flashing Primer. Allow to cure to almost tack free. Remove the backing from the Flash 4 or 9 inch. Press the Flash over the joint ensuring it is well and evenly adhered. The joint is now ready to receive the final coat of SonoWall FT-R.

Option 5: Mix the SonoWall FT-R per the instructions. Roller apply a receiving coat in the joint and out 2 to 5 inches on each side. Lay the Sheathing Fabric, 4 or 9 inch, into the wet membrane. Roller apply additional FT-R into the fabric to embed.

## Rough Window Opening Protection Techniques

### When using SonoWall FT-T™

Note: This membrane is not for use on wood based substrates.

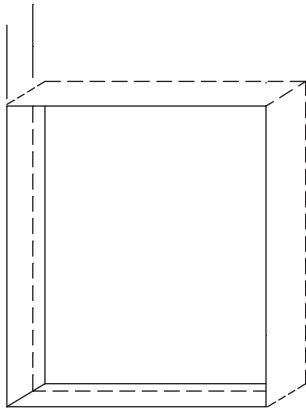
Option A: SonoWall FT-T in conjunction with Detail/Backwrap Mesh

Option B: SonoWall FT-T in conjunction with Flashing Primer and Flash 4 or 9

### When using: SonoWall FT-R™

Option C: SonoWall FT-R in conjunction with Flashing Primer and Flash 9

Option D: SonoWall FT-R in conjunction with Sheathing Fabric, 9 inch wide



Step 1

### Step 1

Mark a continuous line around the inside perimeter of the opening 3"–4" from the exterior face of the sheathing.

If option B or C are being installed, apply Flashing Primer to the surface of the opening between this perimeter line and the sheathing and out onto the sheathing about 6 inches on both sides, top and bottom. Allow to cure before proceeding to the next step.

Based on the option to be used, make ready by precutting the particular material that will be used to wrap the rough opening. As specified, only 9 inch wide material should be used. Cut each piece so that the length is 7 to 8 inches longer than the jam or sill to be wrapped.

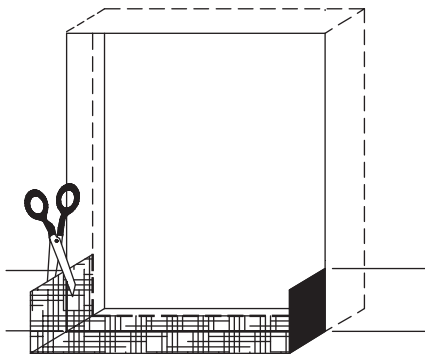
### Step 2

Option A: Trowel the mixed SonoWall FT-T onto the window sill between the center line and the face of the sheathing. Trowel the FT-T out onto the sheathing about 6 inches as well. Crease the Detail/Backwrap Mesh in the appropriate center spot and place into the wet FT-T. Cut the Detail/Backwrap Mesh as shown along the vertical plane of the sheathing. Trowel apply more FT-T into the Detail/Backwrap Mesh to embed.

Option B and C: Peel the backing off the Flash 9 and apply to the primed surface and fold down onto the sheathing. Cut the Flash at the end as shown, along the vertical plane of the sheathing. Press in all areas to ensure good contact and adhesion to the surface.

Option D: Roll the mixed SonoWall FT-R onto the window sill between the center line and the face of the sheathing. Roller apply the FT-R out onto the sheathing about 6 inches as well. Crease the Sheathing Fabric in the appropriate center spot and place into the wet FT-R. Cut the Sheathing Fabric as shown along the vertical plane of the sheathing. Roller apply additional FT-R into the Sheathing Fabric to embed.

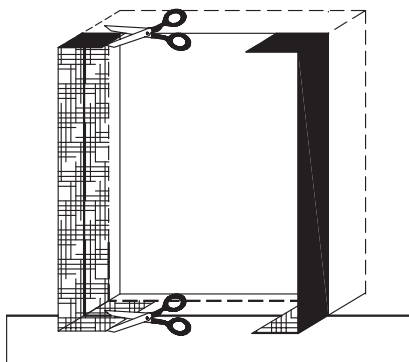
Note: A minimum of 2 applications of SonoWall FT-R is required over OSB and plywood.



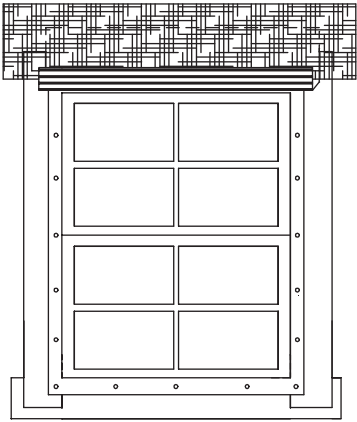
Step 2

### Step 3

Repeat step 2, applying the protective barrier to the rough window opening left and right jam. As in the case of step two, cut the wrapping material of choice along the vertical plane of the sheathing.



Step 3



**Step 4**

**Step 4**

Install the window and attach all required accessories such as the starter track, vent track or window flashing.

Install a strip of the wrapping material used in that option directly to the sheathing over the window. Make sure that this material overlaps the window starter track.

Option A: Trowel apply a receiving coat of SonoWall FT-T™, then apply the Detail / Backwrap Mesh into the wet FT-T. Trowel additional FT-T into the Detail / Backwrap Mesh to embed.

Option B and C: Peel off the backing of the Flash™ and apply directly to the Flashing Primer and sheathing as described above.

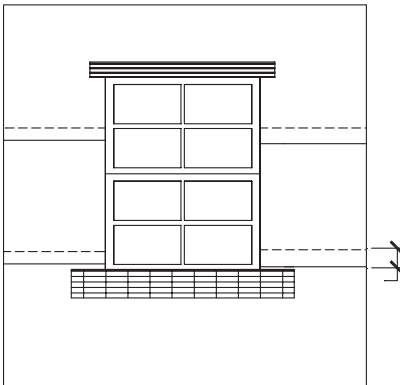
Option D: Roller apply SonoWall FT-R™ onto the surface of the sheathing and then place Sheathing Fabric. Roller apply additional SonoWall FT-R into the Sheathing Fabric to embed.

**Step 5**

Apply SonoWall FT-T or SonoWall FT-R to the entire sheathing surface of the building.

**Step 6**

Apply SonoWall FlexWall WM or FlexWall (optional) System per the current specifications and details.



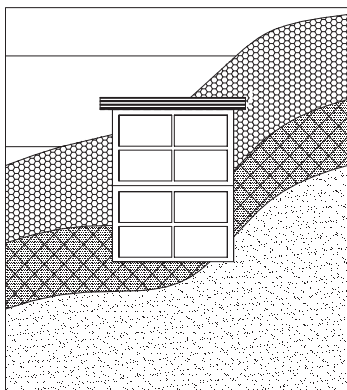
**Step 5**

**Technical Support**

Consult BASF Wall Systems' Technical Services Department for specific recommendations concerning all other applications. Consult the SonoWall website, [www.sonowall.basf.com](http://www.sonowall.basf.com), for additional information about products and systems and for updated literature.

**General**

See Sonowall product bulletins for complete application instructions for SonoWall FT-T (# 1025946) and SonoWall FT-R (# 1024543).



**Step 6**

**Note**

BASF Wall Systems is an operating unit of BASF Construction Chemicals, LLC. (herein after referred to as "BASF Wall Systems")

**Residential Policy**

Apply walls systems in accordance with local building codes in force at the time of construction. On one and two-family residential framed construction, BASF Wall Systems requires that the wall system selected be one that includes provisions for moisture drainage. The choices include water drainage EIFS, SonoWall Stucco Wall Systems, and SonoWall Cement-Board Stucco™ Systems. There are no exceptions to this policy. Under no circumstances will BASF Wall Systems warrant the use of any other system on this type of construction without expressed written authorization from BASF Wall Systems [Residential construction using EIFS on masonry (CMU) or poured concrete does not require the additional water drainage provisions described above. SonoWall Exterior Surfacing Systems for insulating concrete forms are also acceptable.]

See the SonoWall Residential Policy Bulletin for a more detailed discussion of this topic. Consult BASF Wall Systems Technical Services Department for specific recommendations concerning all other applications. Consult the SonoWall website, [www.sonowall.basf.com](http://www.sonowall.basf.com) for additional information about products and systems and for updated literature.

**Disclaimer**

This information and all further technical advice are based on BASF's present knowledge and experience. However, BASF assumes no liability for providing such information and advice including the extent to which such information and advice may relate to existing third party intellectual property rights, especially patent rights. In particular, BASF disclaims all CONDITIONS AND WARRANTIES, WHETHER EXPRESS OR IMPLIED, INCLUDING THE IMPLIED WARRANTIES OF FITNESS FOR A PARTICULAR PURPOSE OR MERCHANTABILITY. BASF SHALL NOT BE RESPONSIBLE FOR CONSEQUENTIAL, INDIRECT OR INCIDENTAL DAMAGES (INCLUDING LOSS OF PROFITS) OF ANY KIND. BASF reserves the right to make any changes according to technological progress or further developments. It is the customer's responsibility and obligation to carefully inspect and test any incoming goods. Performance of the product(s) described herein should be verified by testing and carried out only by qualified experts. It is the sole responsibility of the customer to carry out and arrange for any such testing. Reference to trade names used by other companies is neither a recommendation, nor an endorsement of any product and does not imply that similar products could not be used.

**BASF Wall Systems**

3550 St. Johns Bluff Road South  
Jacksonville, FL 32224-2614  
Phone 800 • 221 • 9255  
Fax 904 • 996 • 6300  
[www.sonowall.basf.com](http://www.sonowall.basf.com)