



SonoWall

TYPICAL DETAILS
1026919

SonoWall™ Surfacing Systems for Insulating Concrete Forms

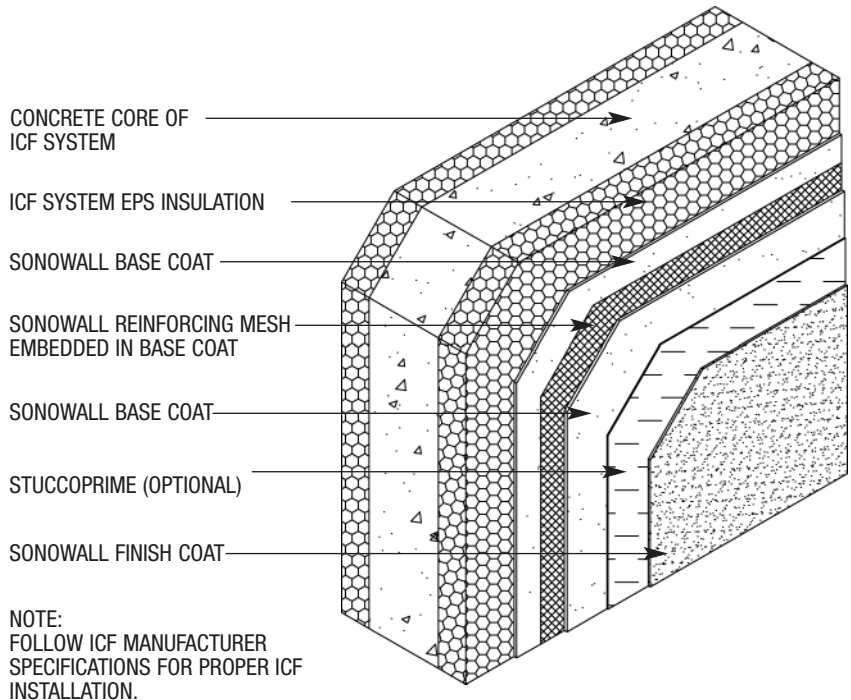
Textured 100% acrylic polymer based finishes and reinforced base coats designed for use as decorative and protective coating systems over ICFs



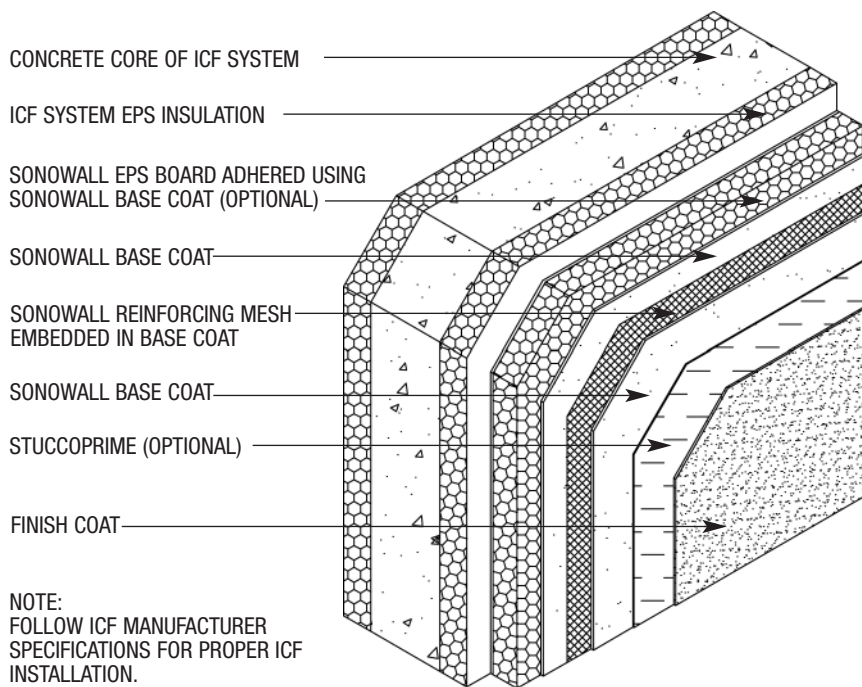
1. SonoWall ICF Surfacing System Application
2. ICF System Installation with Additional Layer of EPS over ICF
3. Reveal
4. EPS Shape Application
5. Window Head/Jamb (Wood Buck)
6. Window Head/Jamb (Vinyl Buck with EPS Trim)
7. Recessed Window Head/Jamb (Wood Buck)
8. Recessed Window Head/Jamb (Vinyl Buck)
9. Window Sill (Wood Buck with EPS Trim)
10. Window Sill (Vinyl Buck with EPS Trim)
11. Recessed Window Sill (Wood Buck)
12. Recessed Window Sill (Vinyl Buck)
13. Parapet
14. Transition to Existing Wall
15. Penetration
16. Termination at Foundation
17. Termination Below Grade
18. Eave Detail Exposed Top Plate
19. Sloped Roof/Wall Intersection
20. Kickout Flashing



Sonowall

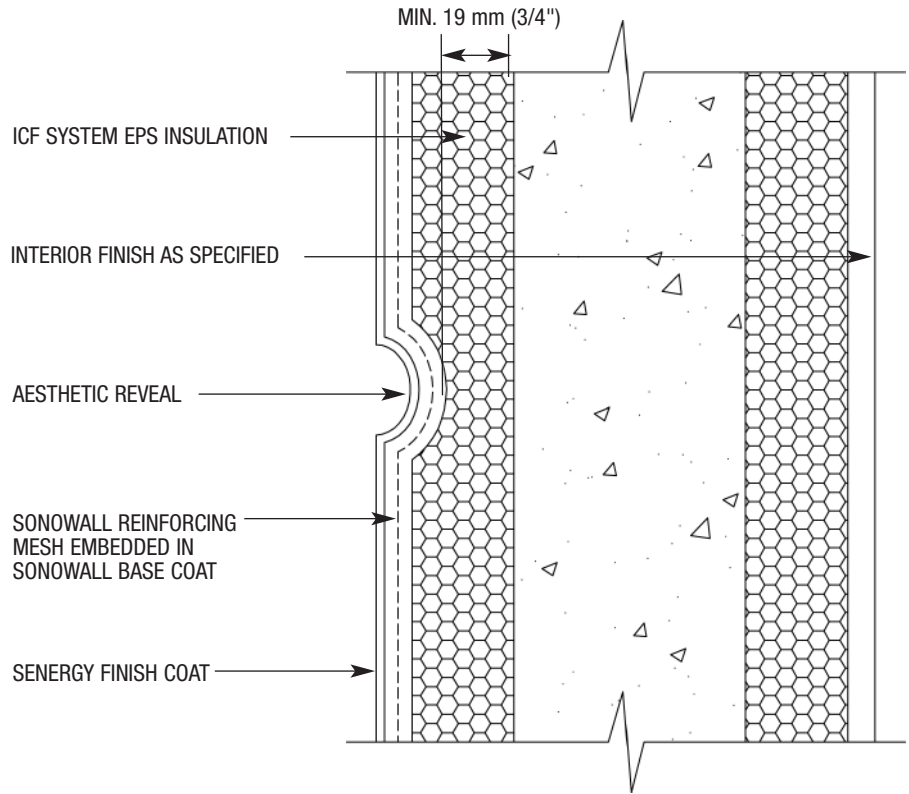


ICF-01 TYPICAL SONOWALL ICF SURFACING SYSTEM INSTALLATION

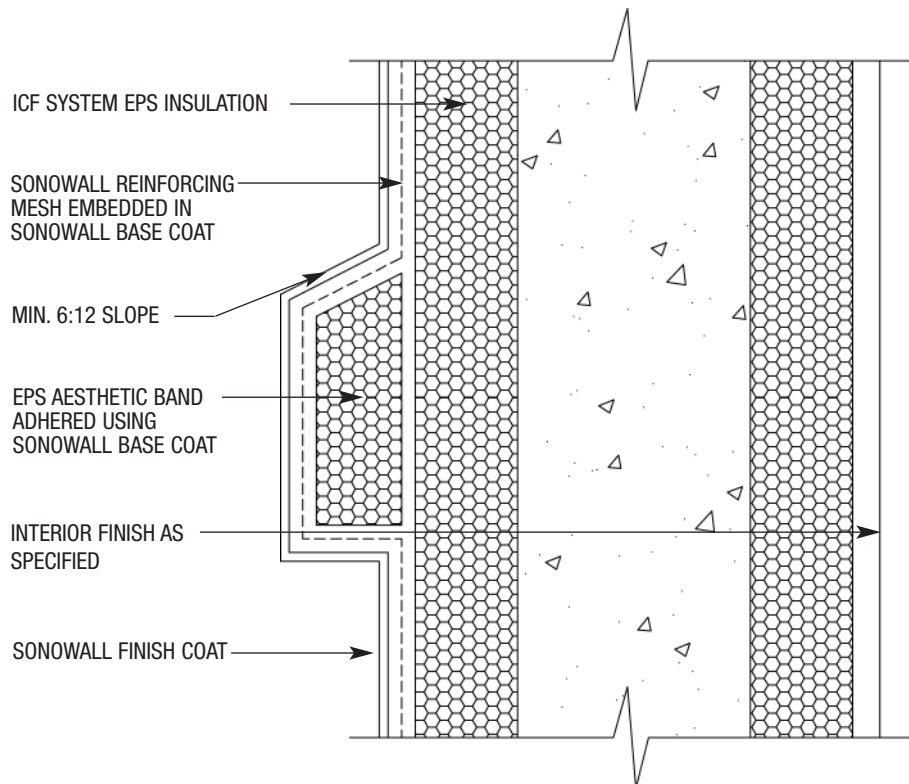


ICF-02 TYPICAL SONOWALL ICF SURFACING SYSTEM INSTALLATION WITH OPTIONAL ADDITIONAL LAYER OF EPS OVER ICF

SonoWall Surfacing Systems for Insulating Concrete Forms



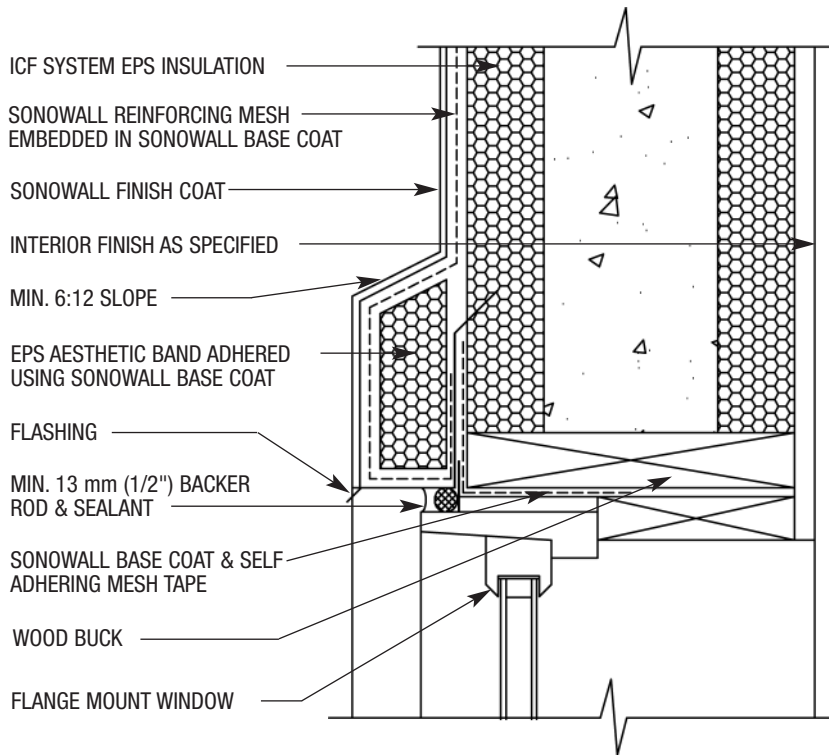
ICF-03 TYPICAL REVEAL



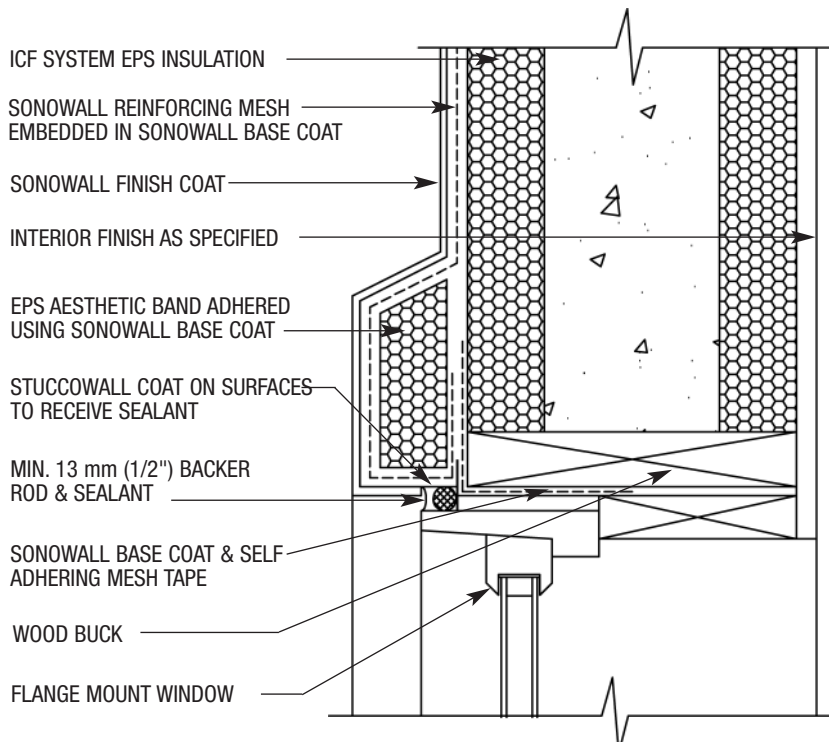
ICF-04 TYPICAL EPS SHAPE APPLICATION



Sonowall

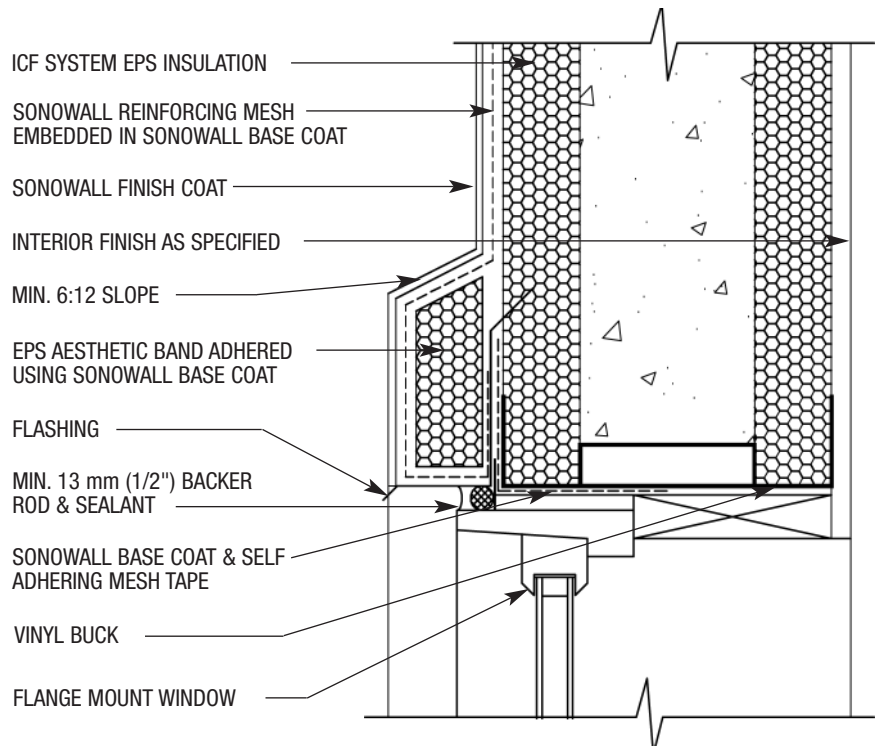


ICF-05 TYPICAL WINDOW HEAD DETAIL (WOOD BUCK)

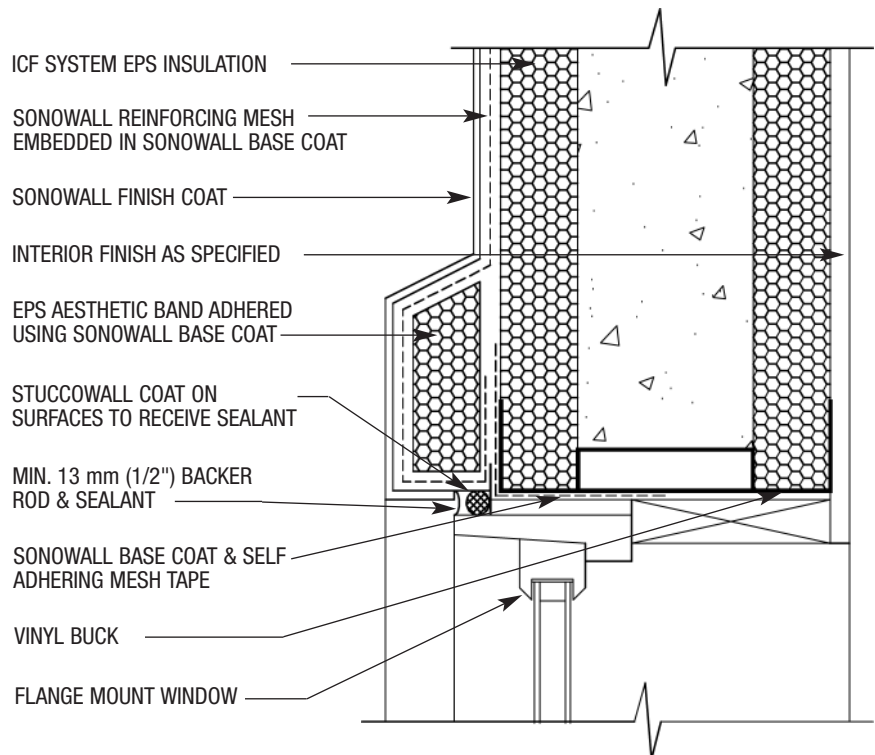


ICF-06 TYPICAL WINDOW JAMB DETAIL (WOOD BUCK)

SonoWall Surfacing Systems for Insulating Concrete Forms



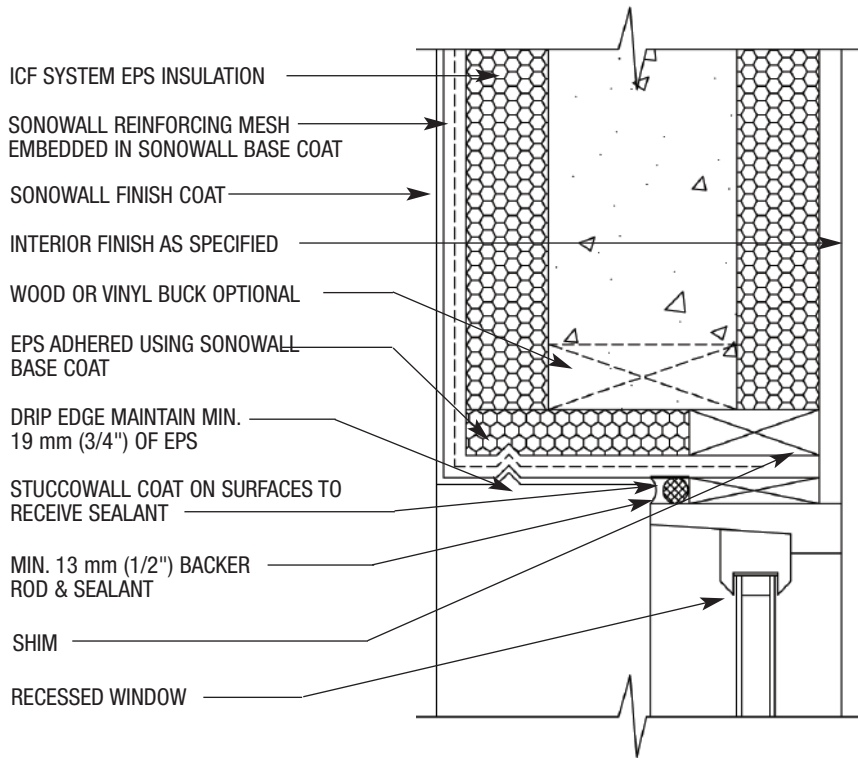
ICF-07 WINDOW HEAD (VINYL BUCK WITH EPS TRIM)



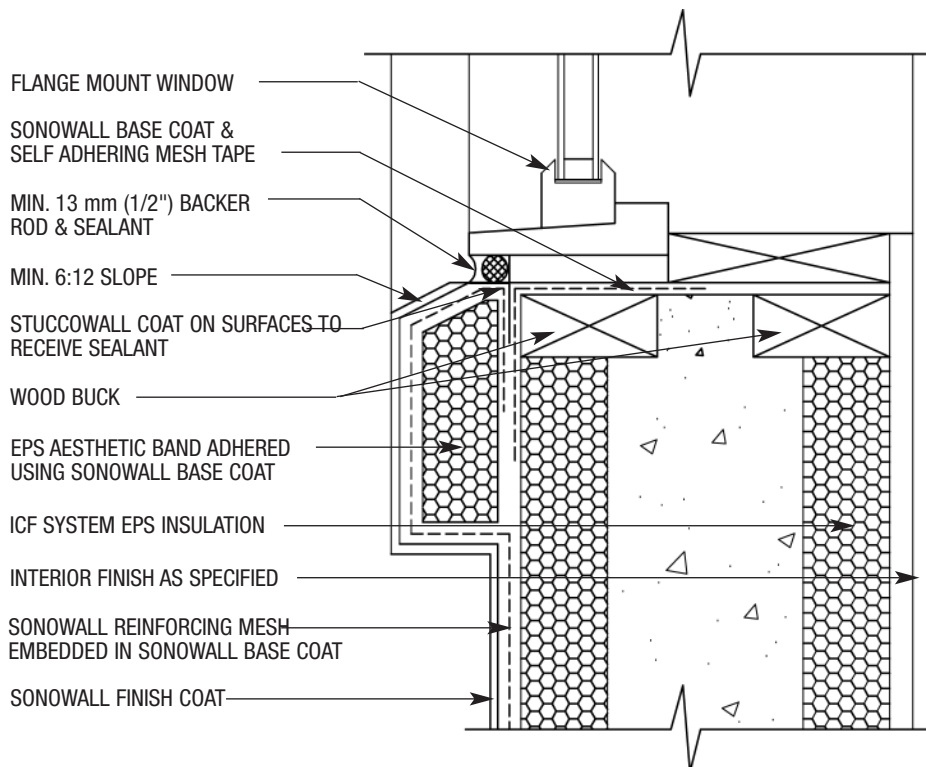
ICF-08 WINDOW JAMB (VINYL BUCK WITH EPS TRIM)



SonoWall

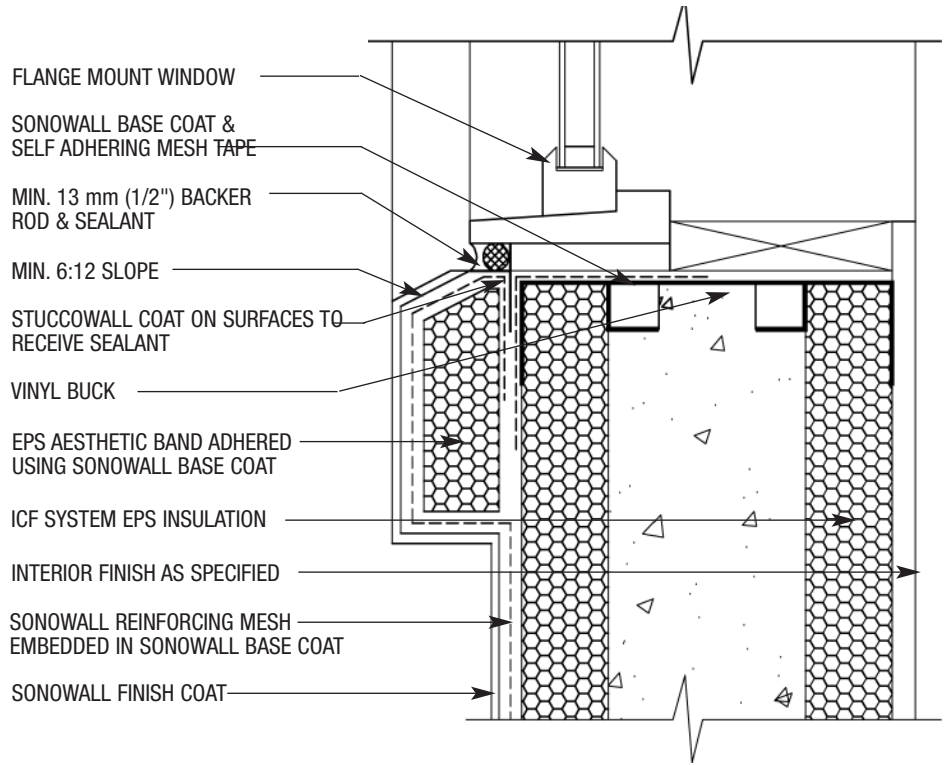


ICF-09 RECESSED WINDOW HEAD/JAMB (WOOD BUCK/VINYL BUCK)

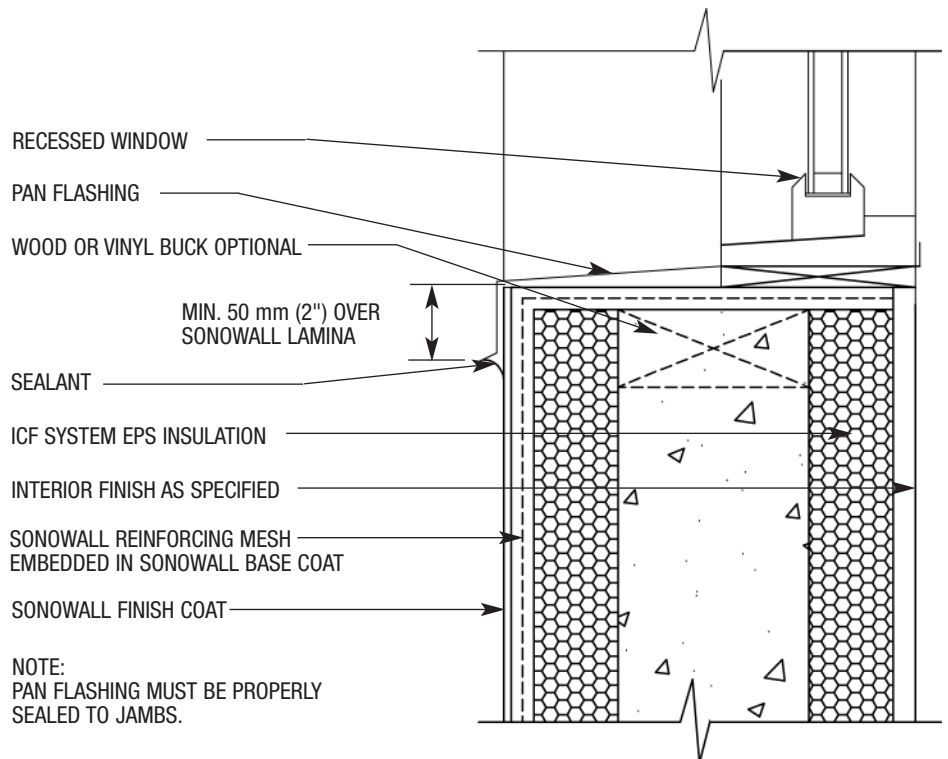


ICF-10 WINDOW SILL (WOOD BUCK WITH EPS TRIM)

SonoWall Surfacing Systems for Insulating Concrete Forms



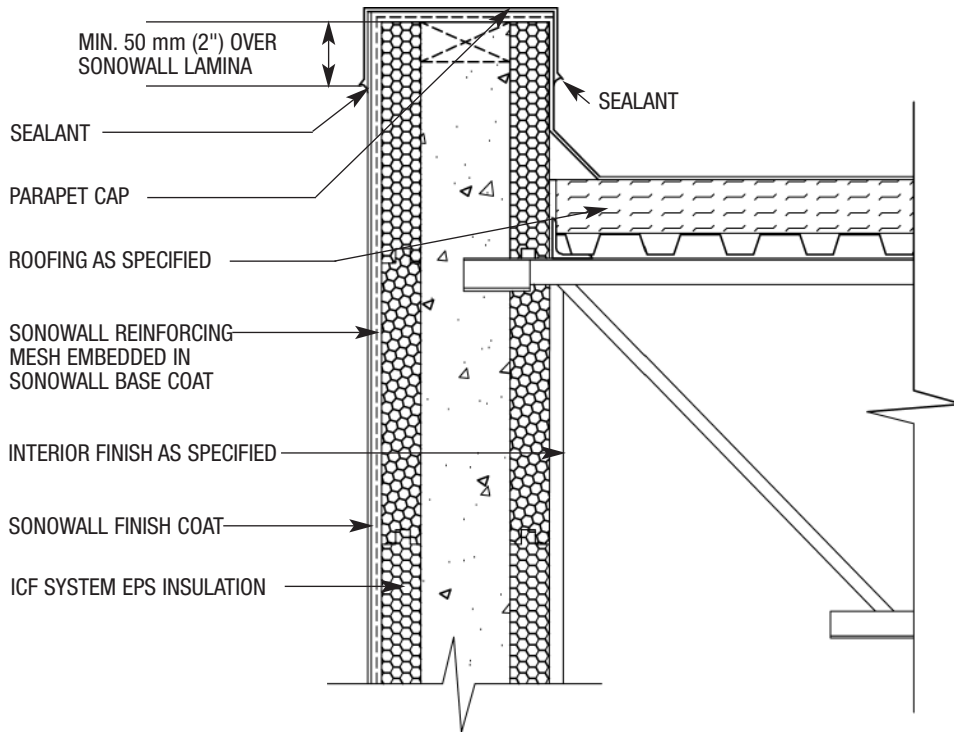
ICF-11 WINDOW SILL (VINYL BUCK WITH EPS TRIM)



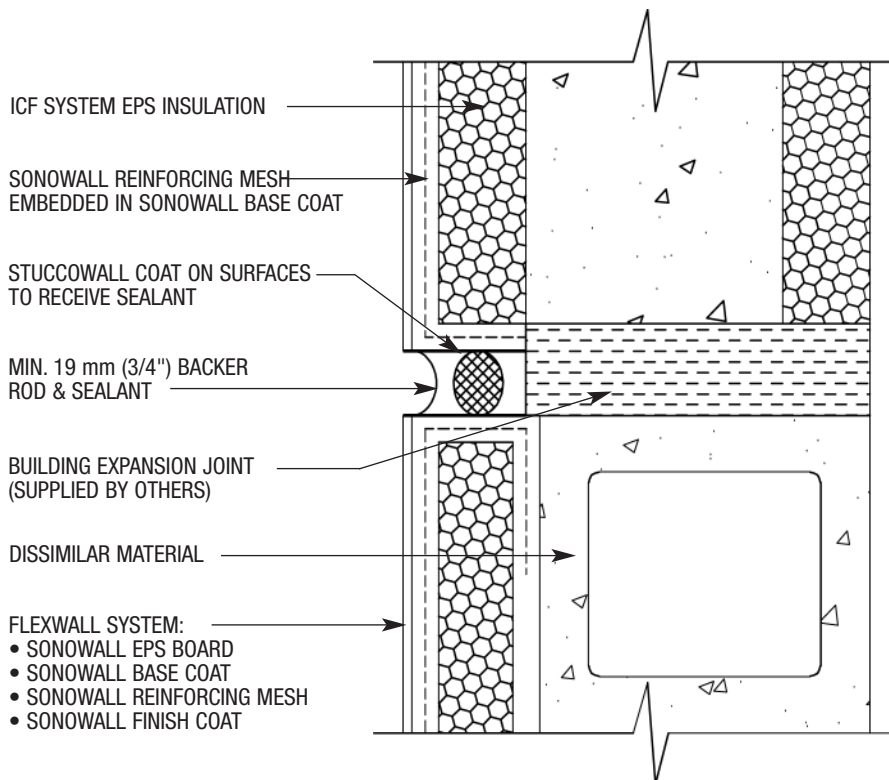
ICF-12 RECESSED WINDOW SILL (WOOD BUCK/VINYL BUCK)



Sonowall

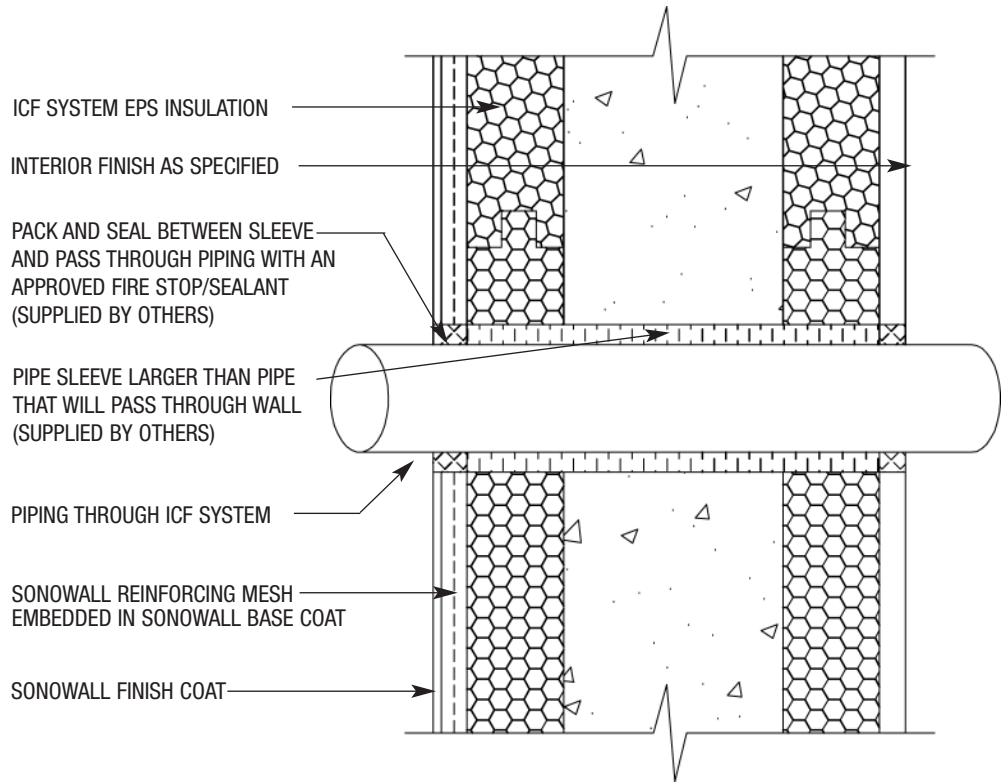


ICF-13 TYPICAL PARAPET DETAIL

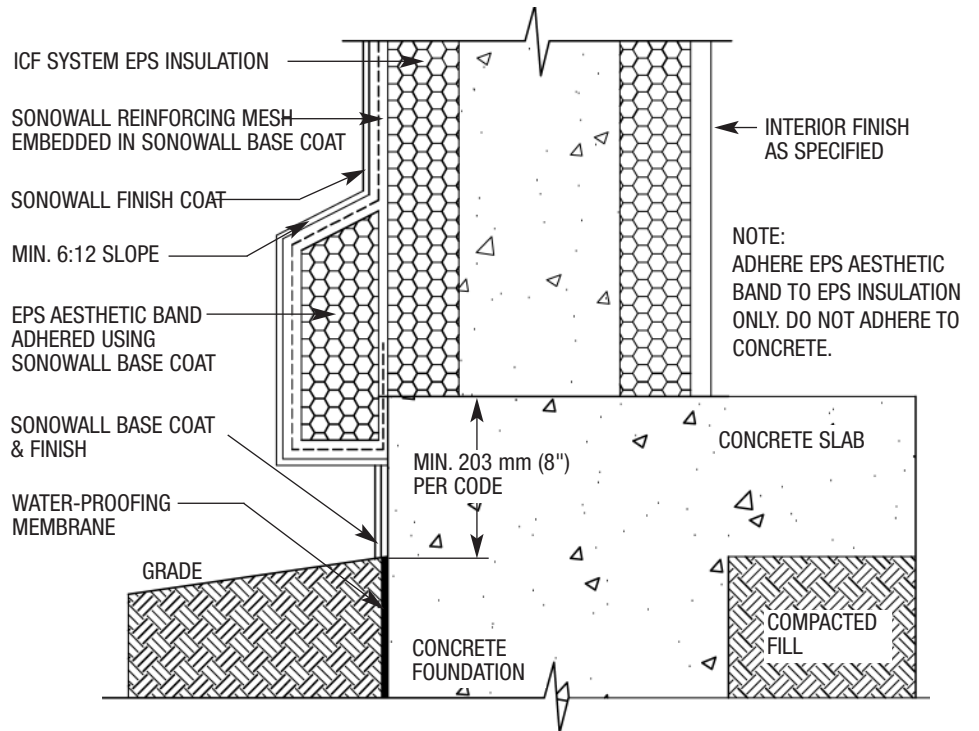


ICF-14 TYPICAL TRANSITION TO EXISTING WALL

SonoWall Surfacing Systems for Insulating Concrete Forms



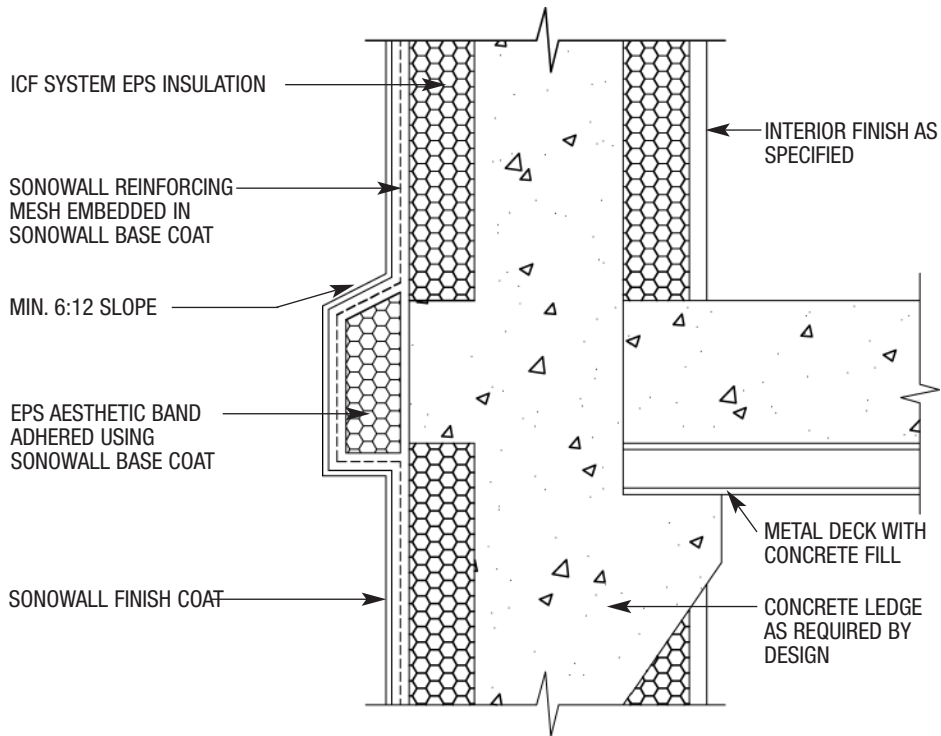
ICF-15 TYPICAL PENETRATION



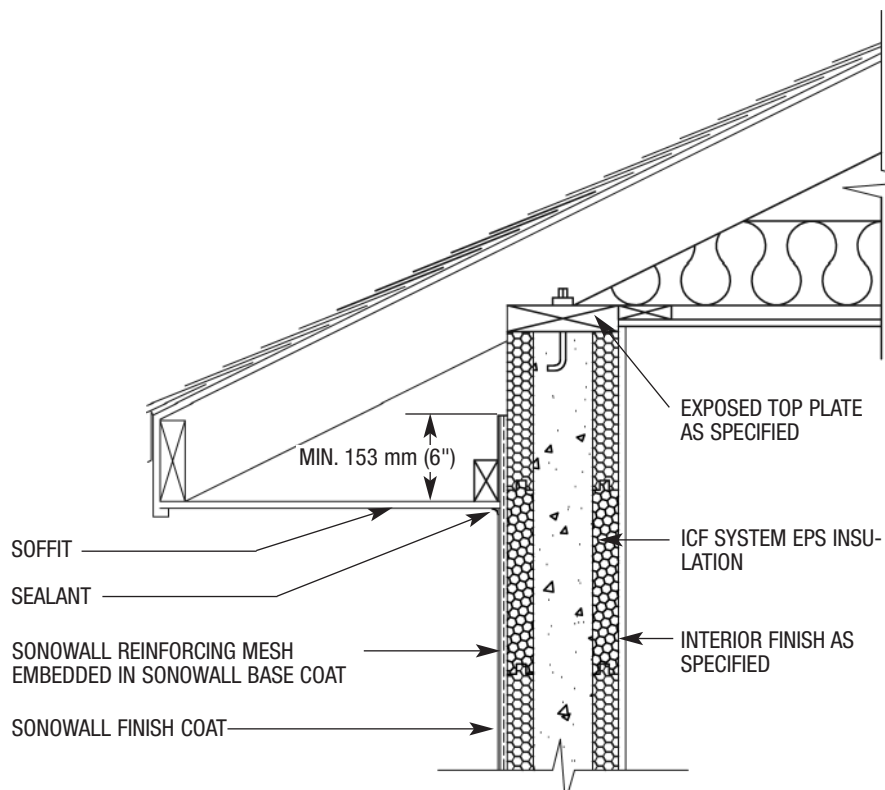
ICF-16 TYPICAL TERMINATION AT FOUNDATION



Sonowall

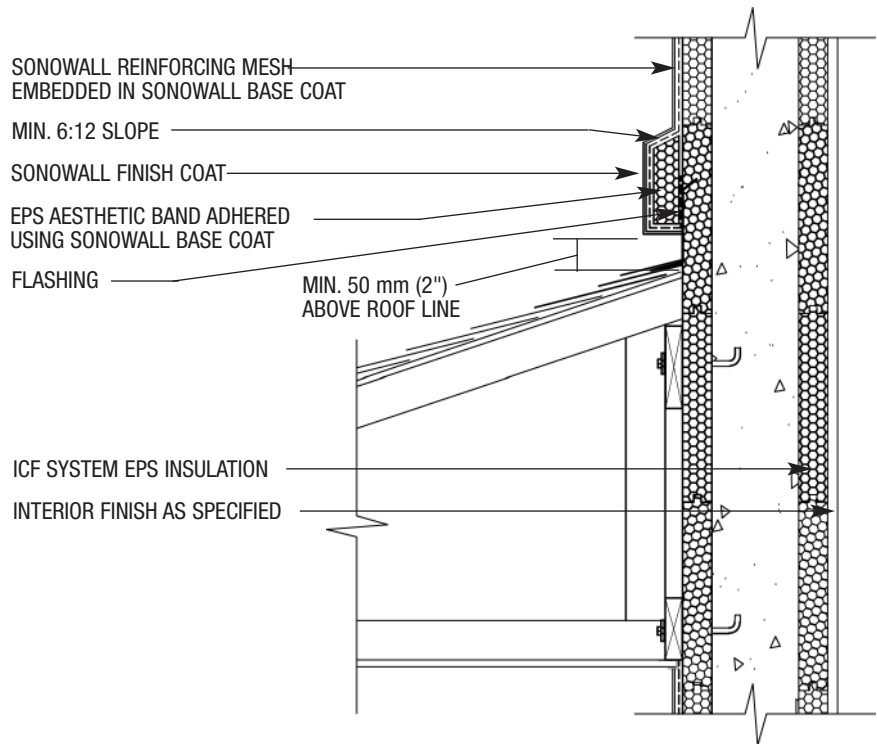


ICF-17 FLOORLINE (NON-COMBUSTIBLE CONSTRUCTION)

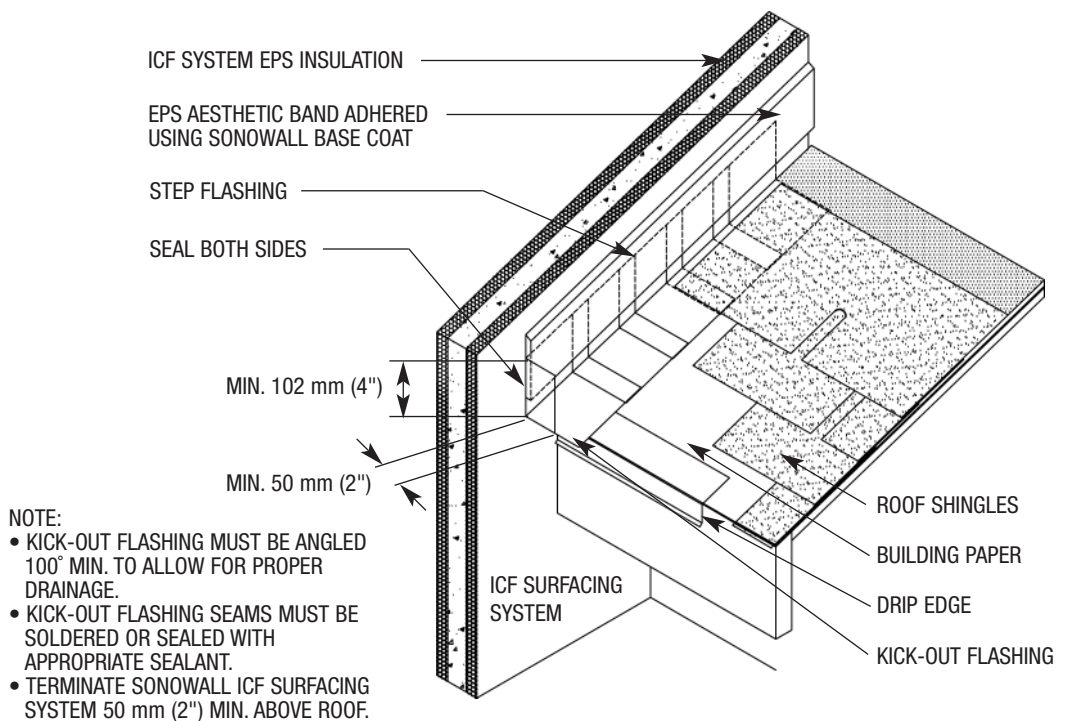


ICF-18 EAVE DETAIL EXPOSED TOP PLATE

SonoWall Surfacing Systems for Insulating Concrete Forms



ICF-19 SLOPED ROOF/WALL INTERSECTION



ICF-20 TYPICAL KICK-OUT FLASHING DETAIL

Technical Support

Consult BASF Wall Systems' Technical Services Department (1-800-221-9255) for specific recommendations concerning all other applications.

Note:

These details represent BASF Wall Systems' latest recommendations. They are presented in good faith by BASF Wall Systems. These details are subject to change without notice. BASF Wall Systems accepts no liability for the end use of these details. For conditions not shown, consult BASF Wall Systems for review of specific details.

Disclaimer

This information and all further technical advice are based on BASF's present knowledge and experience. However, BASF assumes no liability for providing such information and advice including the extent to which such information and advice may relate to existing third party intellectual property rights, especially patent rights. In particular, BASF disclaims all CONDITIONS AND WARRANTIES, WHETHER EXPRESS OR IMPLIED, INCLUDING THE IMPLIED WARRANTIES OF FITNESS FOR A PARTICULAR PURPOSE OR MERCHANTABILITY. BASF SHALL NOT BE RESPONSIBLE FOR CONSEQUENTIAL, INDIRECT OR INCIDENTAL DAMAGES (INCLUDING LOSS OF PROFITS) OF ANY KIND. BASF reserves the right to make any changes according to technological progress or further developments. It is the customer's responsibility and obligation to carefully inspect and test any incoming goods. Performance of the product(s) described herein should be verified by testing and carried out only by qualified experts. It is the sole responsibility of the customer to carry out and arrange for any such testing. Reference to trade names used by other companies is neither a recommendation, nor an endorsement of any product and does not imply that similar products could not be used.

Residential Policy

On one and two-family residential framed construction, BASF Wall Systems requires that the wall system selected be one that includes provisions for moisture drainage. The choices include water managed EIFS, SonoWall Stucco Wall Systems, and SonoWall Cement-Board Stucco™ Wall Systems. SonoWall Exterior Surfacing Systems for insulating concrete forms are also acceptable. There are no exceptions to this policy. Under no circumstances will BASF Wall Systems warrant the use of any other system on this type of construction without expressed written authorization from BASF Wall Systems [Residential construction using EIFS on masonry (CMU) or poured concrete does not require the additional water management provisions described above.]

See the SonoWall *Residential Policy Bulletin* for a more detailed discussion of this topic. Consult BASF Wall Systems Technical Services Department for specific recommendations concerning all other applications. Consult the SonoWall web site, www.sonowall.cc for additional information about products and systems and for updated literature.

BASF Wall Systems

3550 St. Johns Bluff Road South
Jacksonville, FL 32224-2614
Phone 800 • 221 • 9255
Fax 904 • 996 • 6300
www.sonowall.cc